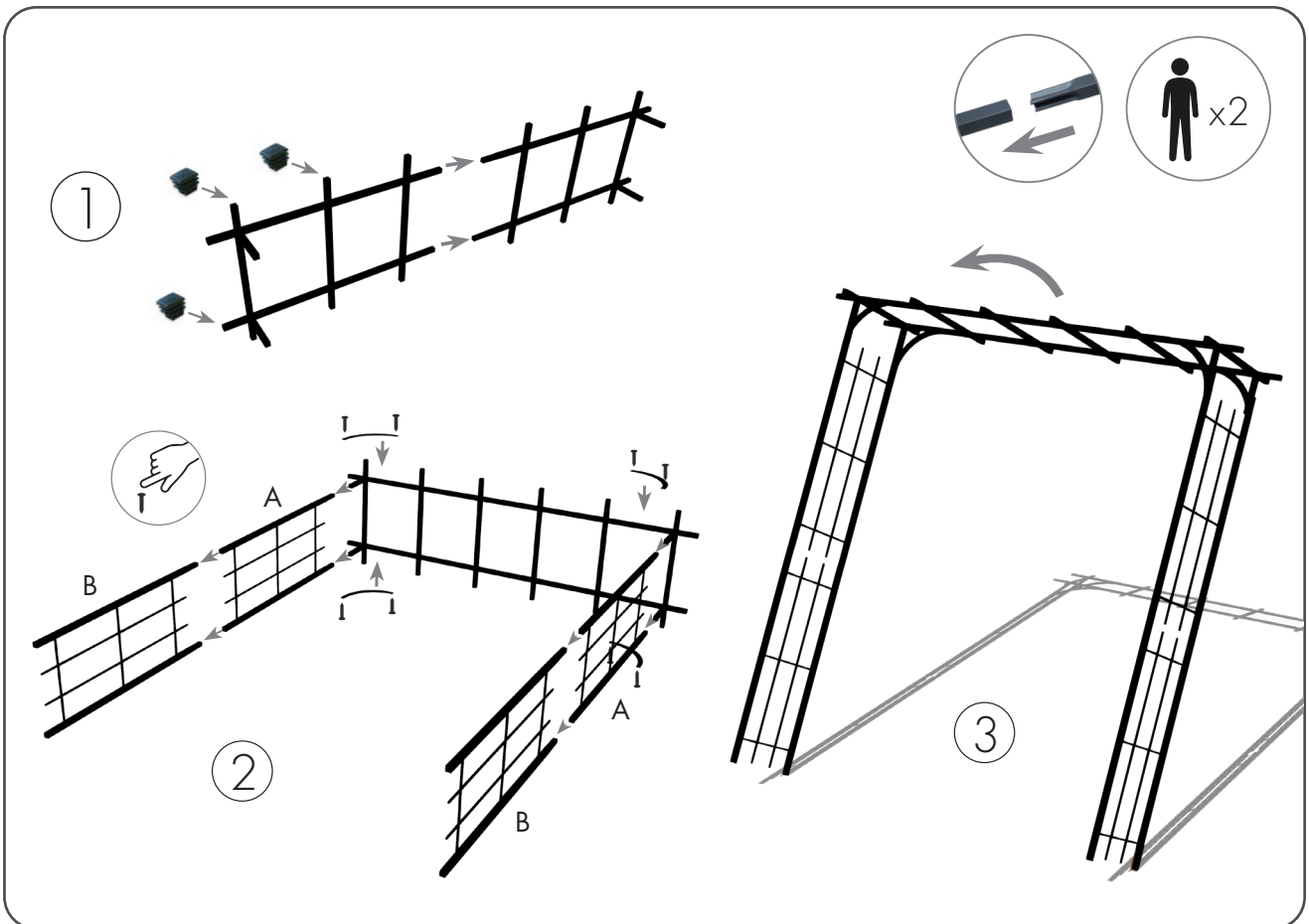
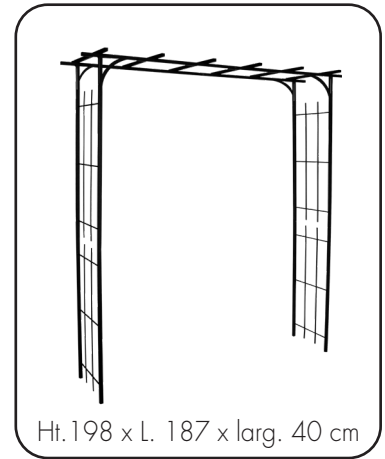
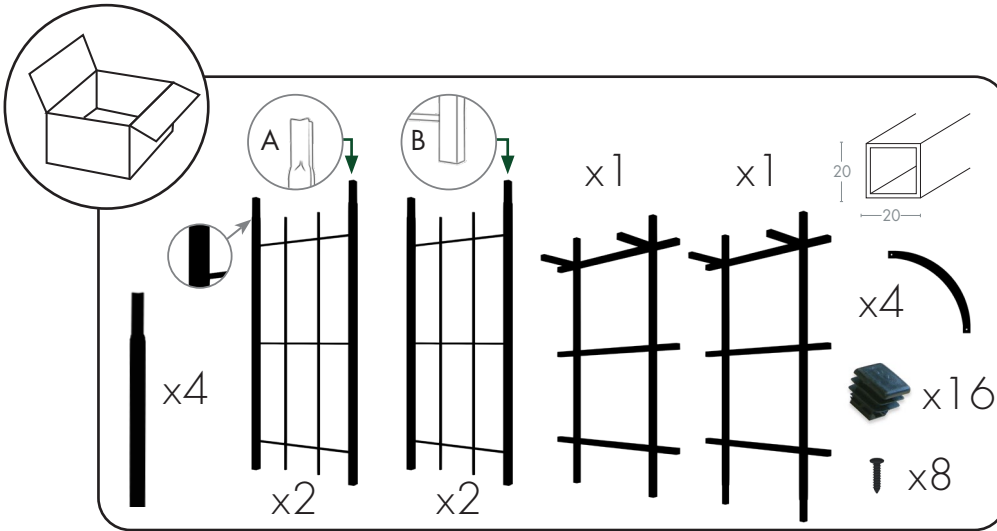


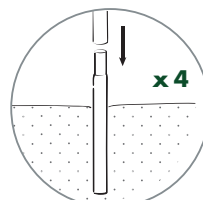
- F NOTICE DE MONTAGE
- GB INSTALLATION INSTRUCTIONS
- D MONTAGEANLEITUNG
- E INSTRUCCIONES DE MONTAJE
- P INSTRUÇÕES DE MONTAGEM
- I ISTRUZIONI DI MONTAGGIO
- NL MONTAGEHANDLEIDING

Ref 3038



Pour assurer une stabilité maximum utiliser les accessoires de fixation.  
To ensure maximum stability use the fixing accessories.

INCLUS / INCLUDED



EN OPTION / OPTIONAL



● Ref. 3511 (x4)